

Luxe's hose fitting with safety clamps are produced to EN14420.It contains DIN 2817 hose fitting and DIN 2817 safety clamps.

Hose fitting with male pipe thread(GA) have a smooth or serrated hose tail with a collar.

Hose fitting with union nut(GI) have a smooth or serrated tail,assembled with a nut by a sealing ring.

Safety clamps are produced to EN14420-3 ,size from DN13 to DN200.

**Application**

Luxe's DIN 2817 fittings & safety clamps are used for chemical, food and drink, petrochemicals,airport refuelling, liquefied gas,etc.

**Material for GA/GI**

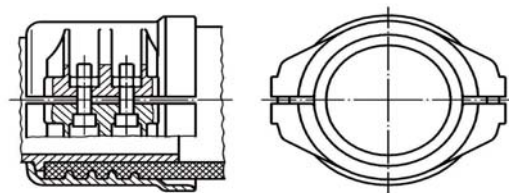
- 1.Stainless steel AISI316/1.4408 by investment casting
- 2.Brass CW614N by forging
- 3.Polypropylene by pipe processing

**Material for Safety clamps**

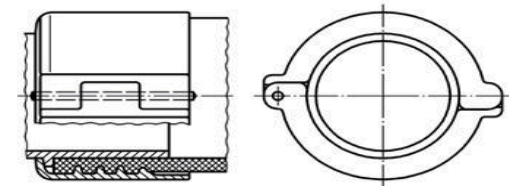
- 1.Stainless steel AISI316/1.4408 by investment casting
- 2. Aluminium by forging
- 3. Brass by forging

**Features**

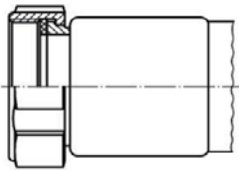
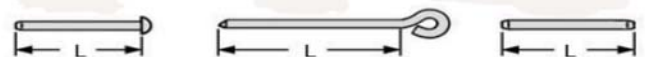
- 1. Standards:  
 Safety clamps comply to standard of EN14420-3  
 Hose fitting GA /GI comply to standard of EN14420-5
- 2. Size:  
 Safety clamps available from DN13 to DN200  
 Hose fitting GA /GI available from 1/2" to 4"



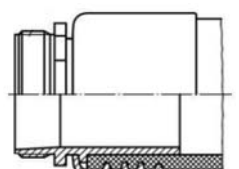
**Clamp bolted**



**Clamp pinned**



**Hose fitting with union nut**





**Hose fitting with male pipe thread**




**Hose fitting with safety clamps EN 14420/DIN 2817**  
**Thread connections EN 14420-5**

<b>Female fitting 2014</b>	<b>Name</b>	<b>Code</b>	<b>Thread</b>	<b>Tail <math>\Phi</math> mm</b>	<b>Price USD</b>
GI with smooth tail in stainless steel 	GI015SS	L0397010	G1/2"	13.4	
	GI020SS	L0397011	G3/4"	19.4	
	GI025SS	L0397012	G1"	25.4	
	GI032SS	L0397013	G11/4"	32.4	
	GI040SS	L0397014	G11/2"	38.4	
	GI050SS	L0397015	G2"	50.4	
	GI065SS	L0397016	G21/2"	63.2	
	GI075SS	L0397017	G3"	75.4	
	GI100SS	L0397018	G4"	100.3	
Brass 	GI015BR	L0397001	G1/2"	13.4	
	GI020BR	L0397002	G3/4"	19.4	
	GI025BR	L0397003	G1"	25.4	
	GI032BR	L0397004	G11/4"	32.4	
	GI040BR	L0397005	G11/2"	38.4	
	GI050BR	L0397006	G2"	50.4	
	GI065BR	L0397007	G21/2"	63.2	
	GI075BR	L0397008	G3"	75.4	
	GI100BR	L0397009	G4"	100.3	
GI with serrated tail in stainless steel 	GIS015SS	L0394010	G1/2"	13.4	
	GIS020SS	L0394011	G3/4"	19.4	
	GIS025SS	L0394012	G1"	25.4	
	GIS032SS	L0394013	G11/4"	32.4	
	GIS040SS	L0394014	G11/2"	38.4	
	GIS050SS	L0394015	G2"	50.4	
	GIS065SS	L0394016	G21/2"	63.2	
	GIS075SS	L0394017	G3"	75.4	
	GIS100SS	L0394018	G4"	100.3	
Brass 	GIS015BR	L0394001	G1/2"	13.4	
	GIS020BR	L0394002	G3/4"	19.4	
	GIS025BR	L0394003	G1"	25.4	
	GIS032BR	L0394004	G11/4"	32.4	
	GIS040BR	L0394005	G11/2"	38.4	
	GIS050BR	L0394006	G2"	50.4	
	GIS065BR	L0394007	G21/2"	63.2	
	GIS075BR	L0394008	G3"	75.4	
	GIS100BR	L0394009	G4"	100.3	

**Hose fitting with safety clamps EN 14420/DIN 2817**  
**Thread connections EN 14420-5**


Male fitting 2014	Name	Code	Thread	Tail $\Phi$ mm	Price USD
GA with smooth tail in stainless steel 	GA015SS	L0301011	G1/2"	13.2	
	GA020SS	L0301012	G3/4"	19.2	
	GA025SS	L0301013	G1"	25.2	
	GA032SS	L0301015	G11/4"	32.2	
	GA040SS	L0301017	G11/2"	38.2	
	GA050SS	L0301020	G2"	50.2	
	GA065SS	L0301022	G21/2"	63.2	
	GA075SS	L0301024	G3"	75.2	
	GA080SS	L0301062	G3"	80.4	
	GA100SS	L0301064	G4"	100.4	
Brass 	GA015BR	L0301001	G1/2"	13.2	
	GA020BR	L0301002	G3/4"	19.2	
	GA025BR	L0301003	G1"	25.2	
	GA032BR	L0301004	G11/4"	32.2	
	GA040BR	L0301005	G11/2"	38.2	
	GA050BR	L0301006	G2"	50.2	
	GA065BR	L0301007	G21/2"	63.2	
	GA075BR	L0301008	G3"	75.2	
	GA080BR	L0301028	G3"	80.4	
	GA100BR	L0301009	G4"	100.4	
PP 	GA015PP	L0301050	G1/2"	13.2	
	GA020PP	L0301051	G3/4"	19.2	
	GA025PP	L0301052	G1"	25.2	
	GA032PP	L0301053	G11/4"	32.2	
	GA040PP	L0301056	G11/2"	38.2	
	GA050PP	L0301057	G2"	50.2	
	GA065PP	L0301058	G21/2"	63.2	
	GA075PP	L0301059	G3"	75.2	
	GA080PP	L0301060	G3"	80.4	
GA with serrated tail in stainless steel 	GAS015SS	L0302053	G1/2"	13.4	
	GAS020SS	L0302054	G3/4"	19.4	
	GAS025SS	L0302055	G1"	25.4	
	GAS032SS	L0302056	G11/4"	32.4	
	GAS040SS	L0302057	G11/2"	38.4	
	GAS050SS	L0302058	G2"	50.4	
	GAS065SS	L0302045	G21/2"	63.4	
	GAS075SS	L0302059	G3"	75.4	
	GAS080SS	L0302060	G3"	80.4	
	GAS100SS	L0302061	G4"	100.4	

## Hose fitting with safety clamps EN 14420/DIN 2817 Thread connections EN 14420-5

Male fitting 2014	Name	Code	Thread	Tail $\Phi$ mm	Price USD
	GAS015BR	L0302001	G1/2"	13.4	
	GAS020BR	L0302002	G3/4"	19.4	
	GAS025BR	L0302003	G1"	25.4	
	GAS032BR	L0302004	G1 1/4"	32.4	
	GAS040BR	L0302005	G1 1/2"	38.4	
	GAS050BR	L0302006	G2"	50.4	
	GAS065BR	L0302008	G2 1/2"	63.4	
	GAS075BR	L0302010	G3"	75.4	
	GAS080BR	L0302012	G3"	80.4	
	GAS100BR	L0302013	G4"	100.4	

We can also supply NPT,BSPT thread as the customer's requested.

## Hose fitting with safety clamps EN 14420/DIN 2817 Safety clamps EN 14420-3

Luxecasting 2014	Name	Code	Pin $\Phi$ -L/mm	Hose OD Min-Max/mm	Price USD
	SX25*6AL	L0603002	5-44	36-38	
	SX32*6AL	L0603003	5-44	43-45	
	SX38*6.5AL	L0603004	5-49	50-52	
	SX50*8AL	L0603005	5-49	63-67	
	SX63*8AL	L0603006	5-69	78-81	
	SX75*8AL	L0603007	5-69	89-92	
	SX100*8AL	L0603008	5-73	115-118	

with bolt and nut  
Stainless steel

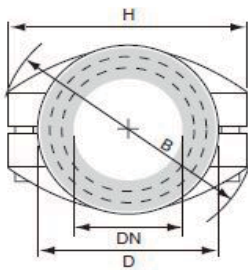
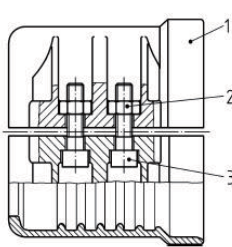



Name	Code	Bolt&Nut	Hose OD Min-Max/mm	Price USD
DN13*5SS	L0602001	4*M6*20	22-24	
DN19*6SS	L0602002	4*M6*20	30-33	
DN25*6SS	L0602003	4*M6*20	36-39	
DN32*6SS	L0602023	4*M6*20	43-46	
DN38*6.5SS	L0602005	4*M6*20	50-52	
DN50*8SS	L0602006	4*M8*25	64-67	
DN63*8SS	L0602040	4*M8*25	78-82	
DN75*8SS	L0602008	4*M8*25	89-94	
DN100*8SS	L0602010	4*M10*40	114-119	
DN150*10SS	L0602057	6*M12*50	167-173	
Brass	DN50*8BR	L0602054	4*M8*25	64-67
	DN75*8BR	L0602055	4*M8*25	89-94
	DN100*8BR	L0602056	4*M10*40	114-119



# Hose fitting with safety clamps EN 14420/DIN 2817

## Safety clamps EN 14420-3

Luxecasting 2014	Name	Code	Bolt&Nut	Hose OD Min-Max/mm	Price USD
  	DN13*5AL	L0602012	4*M6*20	22-24	
	DN19*6AL	L0602013	4*M6*20	30-33	
	DN25*5AL	L0602028	4*M6*20	34-37	
	DN25*6AL	L0602014	4*M6*20	36-39	
	DN25*8AL	L0602037	4*M6*20	40-43	
	DN32*5AL	L0602029	4*M6*20	41-44	
	DN32*6AL	L0602015	4*M6*20	43-46	
	DN32*8/35*6AL	L0602035	4*M6*20	47-50	
	DN38*5AL	L0602030	4*M6*20	47-50	
	DN38*6.5AL	L0602016	4*M6*20	50-52	
	DN38*8AL	L0602034	4*M6*20	53-56	
	DN38*10AL	L0602033	4*M6*20	53-56	
	DN40*7AL	L0602058	4*M6*20	53-56	
	DN40*10AL	L0602038	4*M6*20	58-61	
	DN45*7AL	L0602059	4*M6*20	62-63	
	DN50*5AL	L0602044	4*M8*25	59-62	
	DN50*6AL	L0602039	4*M8*25	62-63	
	DN50*8AL	L0602017	4*M8*25	64-67	
	DN50*10AL	L0602052	4*M8*25	69-71	
	DN63*6AL	L0602060	4*M8*25	74-77	
	DN63*8/65*7AL	L0602043	4*M8*25	78-82	
	DN65*10AL	L0602032	4*M8*25	84-87	
	DN75*6AL	L0602036	4*M8*25	87-90	
	DN75*7.5AL	L0602061	4*M8*25	89-92	
	DN75*8AL	L0602042	4*M8*25	89-94	
	DN75*10AL	L0602068	4*M8*25	94-97	
	DN80*8AL	L0602062	4*M8*25	94-97	
	DN100*8AL	L0602021	4*M10*40	114-119	
	DN100*10AL	L0602069	4*M10*40	118-122	
	DN125*10AL	L0602019	6*M10*40	143-148	
	DN150*10AL	L0602011	6*M12*50	168-174	
	DN200*12AL	L0602053	8*M12*60	222-229	

### Material and Standard for Bolts & Nuts



Bolts	Zinc plated 8.8	EN ISO 4762
	Stainless steel 304	
Nut	Zinc plated 8	EN ISO 4032
	Stainless steel 304	